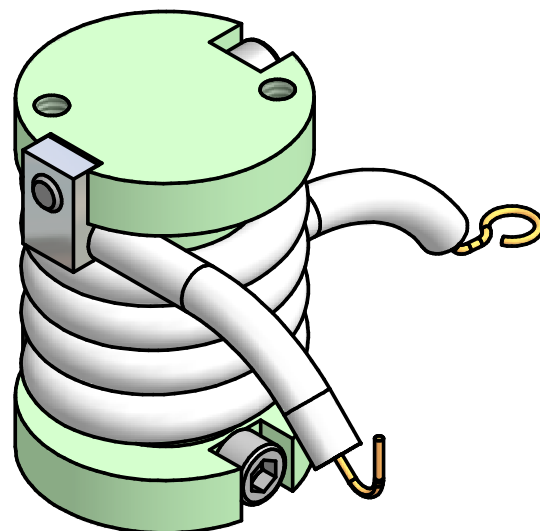
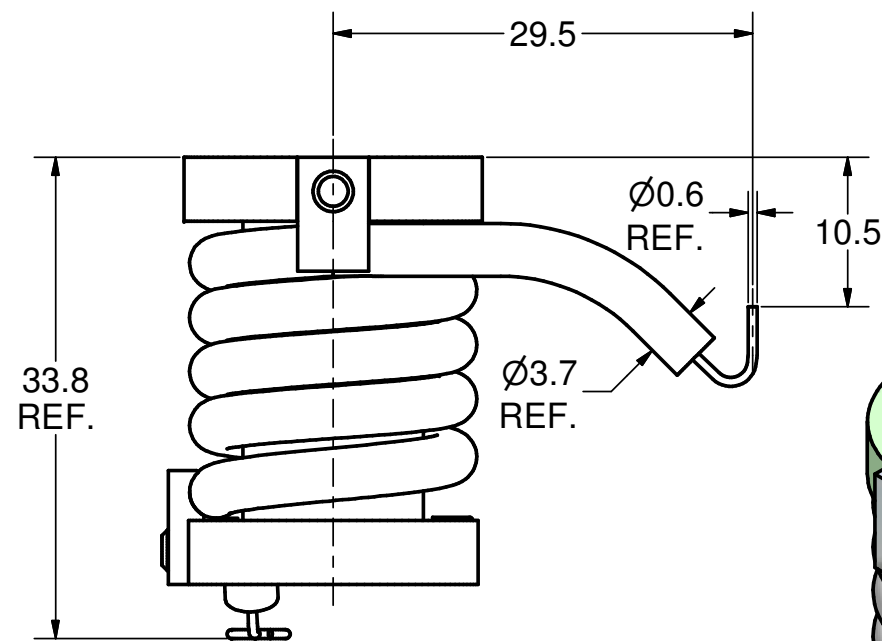


NOTES:

1. NUMBER OF COIL TURNS: N = 4.25

Issued all design changes as Rev C (TIO) - 4/19/07 - SAB



Parts List				
ITEM	PART NUMBER	DESCRIPTION	MATERIAL	QTY
1	100.810.001	COIL HOUSING	G-10	1
2	100.810.002	COIL CLAMP	Stainless Steel, 304	2
3	-	HIGH VOLTAGE CABLE		1
4	-	4-40 x 3/4 Sock. Head Screw		2
			Rev. C	
			Scale : 2:1	mat:
			ASSEMBLY : 75 kW CW Input Coupler	
			DESIGNATION :	
			COIL ASSEMBLY	
			100.810.000 AS	
			1	
			A3	
State	Changes	Date	Name	